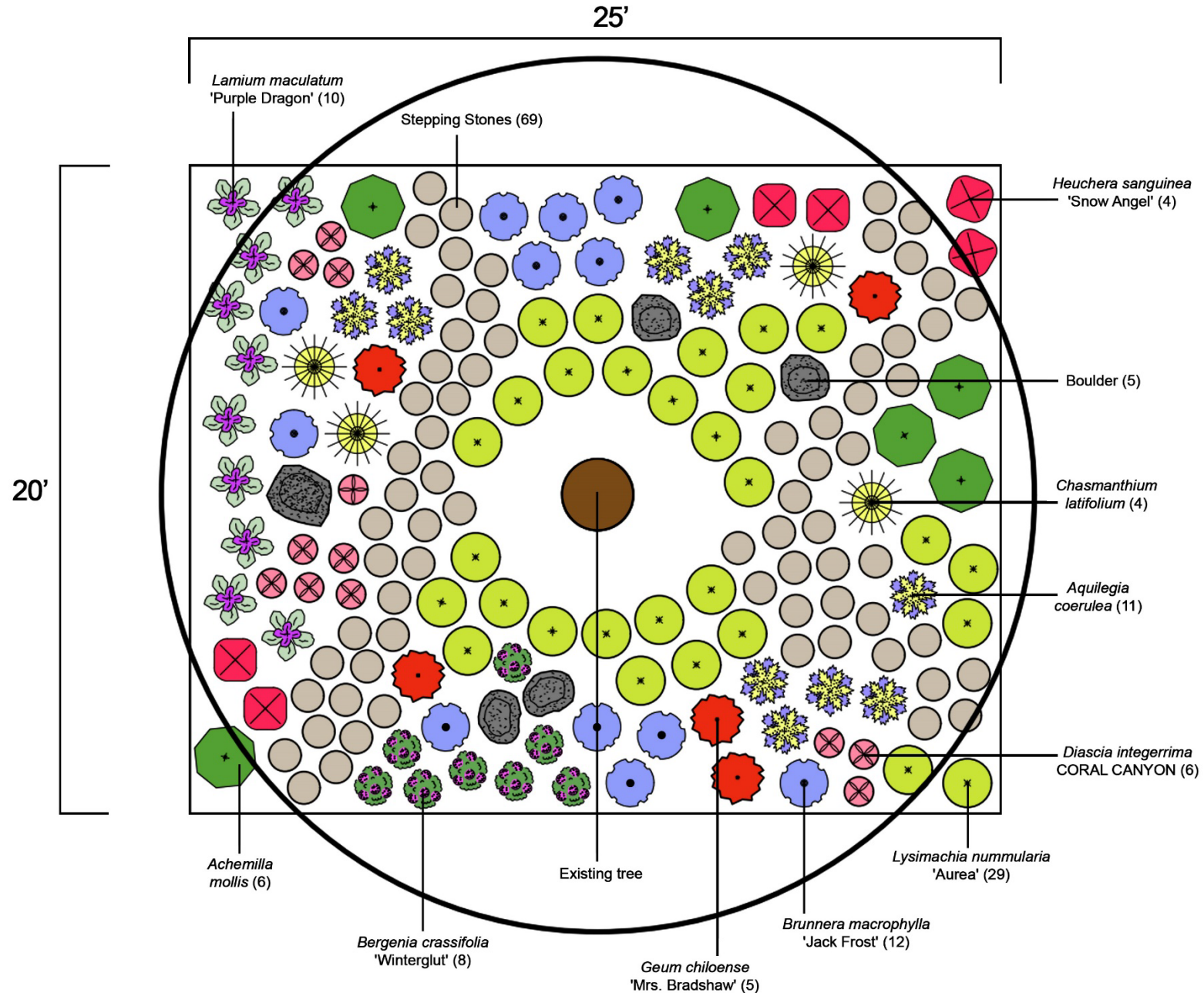


The Shaded Sanctuary

500 square-foot, medium-shade garden design



500 square-foot, medium-shade garden fact sheet

Scientific Name	Common Name	Water Requirement	Sun Exposure	Bloom Time	Low Flammability	Features	Height	Spread	Maintenance
<i>Alchemilla mollis</i>	Lady's Mantle	Medium	Filtered Shade to Shade	Late Spring to Early Summer	Yes	Showy foliage that retains moisture beads after rain	18-24"	18-24"	Cut back browned foliage to the ground in spring
<i>Aquilegia coerulea</i>	Rocky Mountain Columbine	Medium	Filtered Shade to Shade	Late Spring to Early Summer	Yes	Native, attracts pollinators	18-24"	12-18"	Cut back browned foliage to the ground in spring
<i>Bergenia crassifolia</i> 'Winterglut'	Redleaf Bergenia	Medium	Sun to Shade	Early Spring	Yes	Glossy foliage with magenta flowers, ideal for borders and rock gardens	12-15"	12-15"	Cut back browned foliage to the ground in spring
<i>Brunnera macrophylla</i> 'Jack Frost'	Variegated False Forget-Me-Not	Medium	Filtered Shade	Late Spring to Early Summer	No	Heart shaped leaves, attractive foliage	12-18"	12-18"	Cut back browned foliage to the ground in spring
<i>Chasmanthium latifolium</i>	Northern Sea Oats	Medium	Sun to Shade	Mid-Summer	No	Large attractive seed heads	2-3'	18-24"	Cut back in spring to old growth or 6 inches above ground
<i>Diascia integerrima</i> CORAL CANYON	CORAL CANYON Twinspur	Low/Medium	Sun to Filtered Shade	Spring to Summer	Yes	Attracts pollinators, long bloom season	12-15"	8-12"	Cut back browned foliage to the ground in spring



Scientific Name	Common Name	Water Requirement	Sun Exposure	Bloom Time	Low Flammability	Features	Height	Spread	Maintenance
<i>Geum chiloense</i> 'Mrs. Bradshaw'	Red Avens	Medium	Sun to Shade	Early to Mid-Summer	Yes	Attracts pollinators, attract seed pods	18-24"	12-18"	Cut back browned foliage to the ground in spring
<i>Heuchera sanguinea</i> 'Snow Angel'	Variegated Coral Bells	Low/Medium	Sun to Shade	Late Spring to Summer	No	Attracts pollinators, versatile	12-18"	10-15"	Cut back browned foliage to the ground in spring
<i>Lamium maculatum</i> 'Purple Dragon'	Purple Dragon Nettle	Medium	Filtered Shade to Shade	Spring	Yes	Attracts pollinators, deer and rabbit resistant, long bloom season	4-8"	12-18"	Cut back browned foliage to the ground in spring
<i>Lysimachia nummularia</i> 'Aurea'	Golden Moneywort	Medium	Sun to Shade	Late Spring to Early Summer	No	Unique lime green foliage,	2-4"	12-18"	Cut back browned foliage to the ground in spring

If you need additional information or have questions regarding this garden design and fact sheet, please contact Highlands Ranch Water's Water Efficiency Coordinator at pmcfarland@hrwater.org or 720-240-4918.

