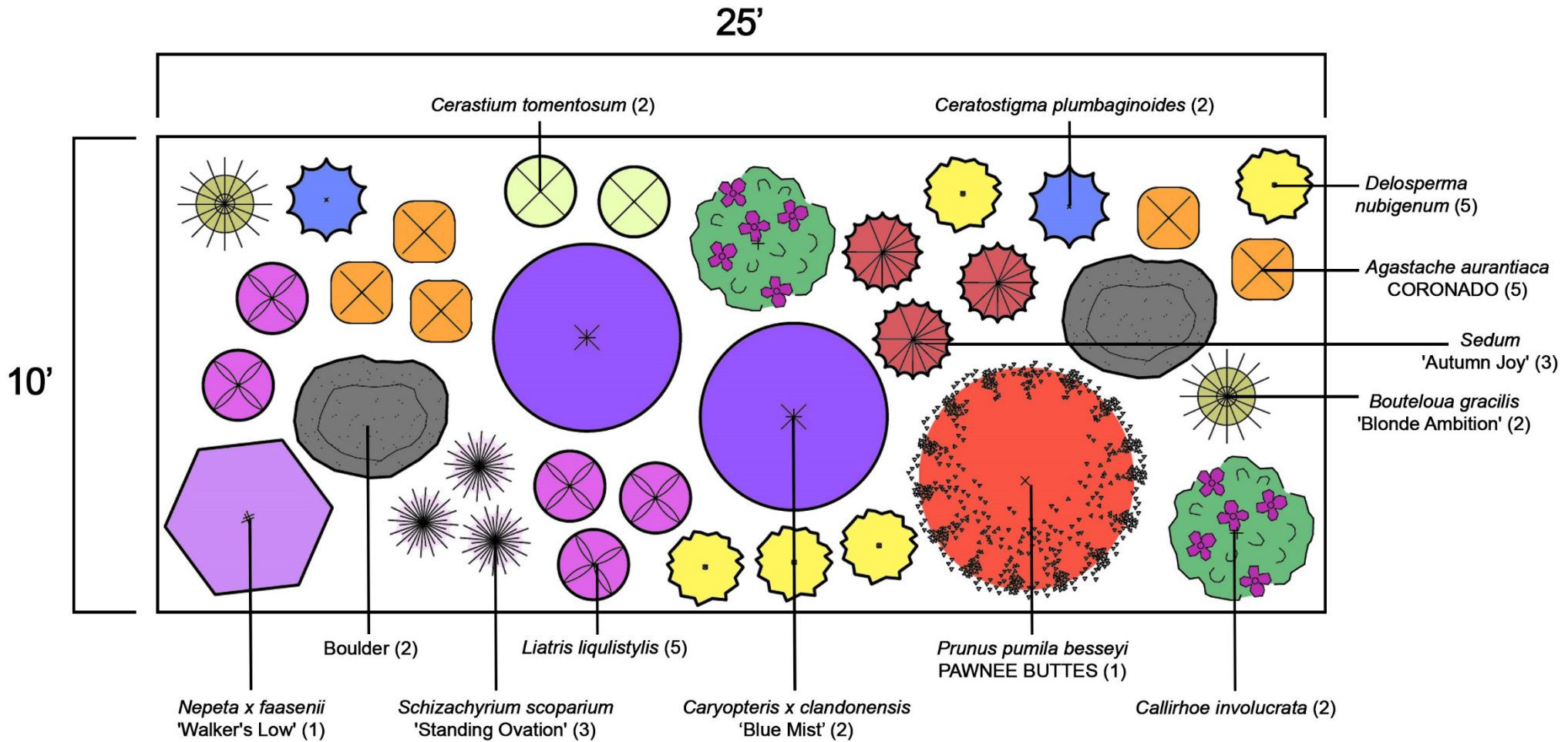


# The Petite Pollinator

250 square-foot garden design



## 250 square-foot garden fact sheet

Scientific Name	Common Name	Water Requirement	Sun Exposure	Bloom Time	Low Flammability	Features	Height	Spread	Maintenance
<i>Agastache aurantiaca</i> CORONADO	CORONADO Hyssop	Low	Sun to Filtered Shade	Mid- Summer to Fall	No	Attracts pollinators, aromatic	15-18"	12-15"	Cut back browned foliage to the ground in spring
<i>Bouteloua gracilis</i> 'Blonde Ambition'	Blonde Ambition Grama Grass	Very Low	Sun	Summer to Fall	No	Native selection, tolerant of all soils	2-3'	1-2'	Cut back in spring to old growth or 6 inches above ground
<i>Callirhoe involucrata</i>	Prairie Winecups	Low	Sun	Early Summer to Fall	Yes	Attracts pollinators, long bloom season	6-12"	2-3'	Pinch back to prevent spreading if desired, cut back browned foliage to the ground in spring
<i>Caryopteris x clandonensis</i> 'Blue Mist'	Blue Mist Spirea	Low	Sun	Mid to Late Summer	No	Attracts pollinators, deer resistant	3-4'	2-3'	Low maintenance, cut back 12 inches above ground once every 5 years
<i>Cerastium tomentosum</i>	Snow in Summer	Low	Sun	Late Spring to Early Summer	Yes	Attracts pollinators, early bloomer, rabbit and deer resistant	6-12"	12-18"	Somewhat evergreen, cut browned foliage to ground in the spring



Scientific Name	Common Name	Water Requirement	Sun Exposure	Bloom Time	Low Flammability	Features	Height	Spread	Maintenance
<i>Ceratostigma plumbaginoides</i>	Plumbago	Low	Sun to Shade	Mid to Late Summer	Yes	Attracts pollinators, foliage turns red in the fall	8-12"	18-24"	Cut browned foliage to ground in spring
<i>Delosperma nubigenum</i>	Hardy Yellow Iceplant	Low	Sun	Early to Mid-Summer	Yes	Showy flowers	1-2"	12-18"	Long lived perennial with virtually no maintenance
<i>Liatris ligulistylis</i>	Rocky Mountain Blazing Star	Low	Sun	Summer to Fall	No	Attracts Monarch butterflies	1-3'	6-24"	Cut browned foliage to ground in the spring
<i>Nepeta x faassenii</i> 'Walker's Low'	Catmint	Low	Sun	Summer	No	Attracts pollinators, deer and rabbit resistant, aromatic	18-24"	2-3'	Cut browned foliage to ground in the spring
<i>Prunus pumila besseyi</i> PAWNEE BUTTES	Creeping Western Sandy Cherry	Low	Sun	Spring	No	Fragrant flowers, fruit bearing, leaves turn red and purple in fall	15-30"	4-6'	Prune crossing and dead canes after flowering
<i>Schizachyrium scoparium</i> 'Standing Ovation'	Standing Ovation Little Bluestem Grass	Low	Sun	Late Summer	No	Fall color, winter interest	3-4'	12-18"	Cut back in spring to old growth or 6 inches about ground



Scientific Name	Common Name	Water Requirement	Sun Exposure	Bloom Time	Low Flammability	Features	Height	Spread	Maintenance
<i>Sedum</i> 'Autumn Joy'	Autumn Joy Stonecrop	Low	Sun	Late Summer to Fall	Yes	Attracts pollinators, deer and rabbit resistant, showy flowers, seed heads provide winter interest	18-24"	12-18"	Prefers nutrient poor soil, cut back browned foliage to the ground in spring

If you need additional information or have questions regarding this garden design and fact sheet, please contact Highlands Ranch Water's Water Efficiency Coordinator at [pmcfarland@hrwater.org](mailto:pmcfarland@hrwater.org) or 720-240-4918.

