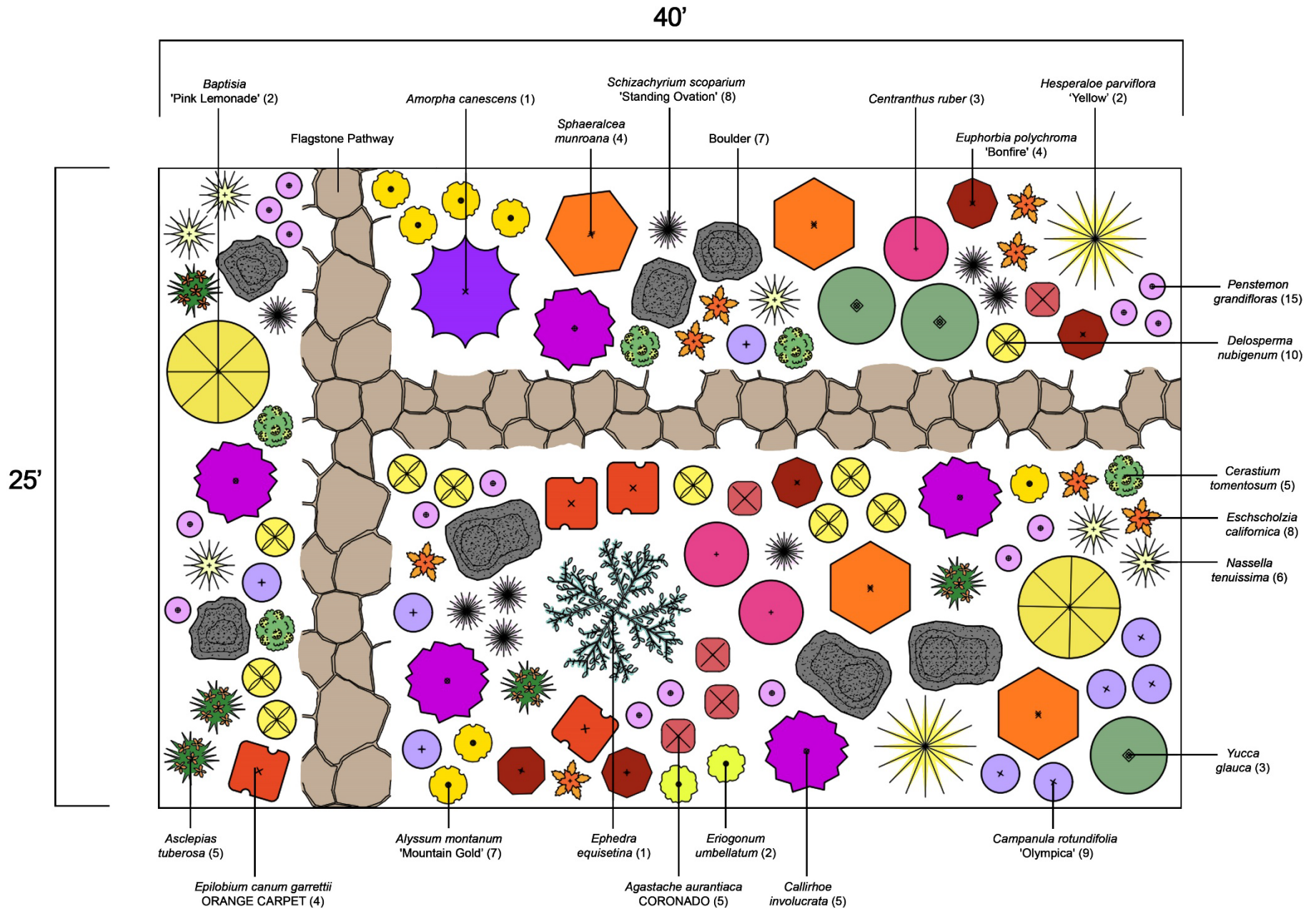


# Colorful Colorado

1,000 square-foot garden design



# 1,000 square-foot garden fact sheet

Scientific Name	Common Name	Water Requirement	Sun Exposure	Bloom Time	Low Flammability	Features	Height	Spread	Maintenance
<i>Agastache aurantiaca</i> CORONADO	CORONADO Hyssop	Low	Sun to Filtered Shade	Mid- Summer to Fall	No	Attracts pollinators, aromatic	15-18"	12-15"	Cut back browned foliage to the ground in spring
<i>Alyssum montanum</i> 'Mountain Gold'	Basket of Gold	Low	Sun	Mid Spring	Yes	Showy flowers, low maintenance, ideal for rock gardens	6-12"	12-18"	Cut back browned foliage to the ground in spring
<i>Amorpha canescens</i>	Leadplant	Very Low	Sun	Mid to Late Summer	No	Attracts pollinators and small animals, tolerates air pollution	2-4'	2-4'	Cut back canes 12 inches above ground in spring
<i>Asclepias tuberosa</i>	Butterfly Weed	Low	Sun	Mid to Late Summer	Yes	Native, attracts pollinators, showy flowers	18-36"	18-24"	Cut back browned foliage to the ground in spring
<i>Baptisia</i> 'Pink Lemonade'	Pink Lemonade False Indigo	Low	Sun	Summer	No	Attracts pollinators, deer and rabbit resistant, attractive seed pods	3-4'	3-4'	Cut back browned foliage to the ground in spring



Scientific Name	Common Name	Water Requirement	Sun Exposure	Bloom Time	Low Flammability	Features	Height	Spread	Maintenance
<i>Callirhoe involucrata</i>	Prairie Winecups	Low	Sun	Early Summer to Fall	Yes	Attracts pollinators, long bloom season	6-12"	2-3'	Cut back browned foliage to the ground in spring
<i>Campanula rotundifolia</i> 'Olympica'	Blue Harebell	Low	Sun to Filtered Shade	Late Spring to Mid-Summer	Yes	Native, long bloom season, self seeds	6-18"	12-18"	Cut back browned foliage to the ground in spring
<i>Centranthus ruber</i>	Red Valerian	Low	Sun	Early to Late Summer	Yes	Attracts pollinators, showy flowers, cut flower	2-3'	18-24"	Cut back browned foliage to the ground in spring
<i>Cerastium tomentosum</i>	Snow in Summer	Low	Sun	Late Spring to Early Summer	Yes	Attracts pollinators, early bloomer, rabbit and deer resistant	6-12"	12-18"	Cut back browned foliage to the ground in spring
<i>Delosperma nubigenum</i>	Hardy Yellow Iceplant	Low	Sun	Early to Mid-Summer	Yes	Showy flowers	1-2"	12-18"	Long lived perennial with virtually no maintenance
<i>Ephedra equisetina</i>	Bluestem Joint Fir	Low	Sun to Filtered Shade	N/A	No	Evergreen, year-round interest, works as specimen planting or in masses	3-5'	2-6'	Can be pruned every 5 to 10 years if compact shape is desired
<i>Epilobium canum garrettii</i> ORANGE CARPET	ORANGE CARPET Hummingbird Trumpet	Low	Sun	Late Summer to Fall	No	Attracts hummingbirds	4-6"	15-20"	Cut back browned foliage to the ground in spring



Scientific Name	Common Name	Water Requirement	Sun Exposure	Bloom Time	Low Flammability	Features	Height	Spread	Maintenance
<i>Eriogonum umbellatum</i>	Sulphur Flower	Very Low	Sun	Early to Mid-Summer	No	Native, attracts pollinators, foliage turns red in winter	6-12"	12-24"	Cut flower stalks back to foliage in spring
<i>Eschscholzia californica</i>	California Poppy	Low	Sun	Early to Late Summer	No	Easy to grow, self seeds	1-2'	12-18"	Cut back browned foliage to the ground in spring
<i>Euphorbia polychroma</i> 'Bonfire'	Bonfire Cushion Spurge	Low	Sun	Late Spring	Yes	Leaves emerge bright green and slowly transition to red throughout season	10-12"	15-20"	None
<i>Hesperaloe parviflora</i> 'Yellow'	Yellow False Yucca	Very Low	Sun	Summer	Yes	Yellow flowers on stalks twice the height of foliage	3-4'	3-4'	Cut flower stalks back to foliage in spring
<i>Nassella tenuissima</i>	Mexican Feather Grass	Low	Sun	Spring	No	Unique lime green foliage	2-3'	1-2'	Cut back in spring to old growth or 6 inches above ground
<i>Penstemon grandifloras</i>	Shell Leaf Pink Penstemon	Low	Sun	Summer	Yes	Native, attracts pollinators	2-3'	8-12"	Cut back browned foliage to the ground in spring



Scientific Name	Common Name	Water Requirement	Sun Exposure	Bloom Time	Low Flammability	Features	Height	Spread	Maintenance
<i>Schizachyrium scoparium</i> 'Standing Ovation'	Standing Ovation Little Bluestem	Low	Sun	Late Summer	No	Fall color, winter interest	3-4'	12-18"	Cut back in spring to old growth or 6 inches above ground
<i>Sphaeralcea munroana</i>	Orange Globe Mallow	Very Low	Sun	Summer to Fall	No	Native, attracts pollinators, showy flowers, tolerates poor soils	1-2'	1-2'	Cut back browned foliage to the ground in spring
<i>Yucca glauca</i>	Soapweed Yucca	Very Low	Sun	Mid to Late Summer	Yes	Native, attracts pollinators, sword-like leaves provide year-round interest	2-4'	2-4'	Cut flower stalks back to foliage in spring

If you need additional information or have questions regarding this garden design and fact sheet, please contact Highlands Ranch Water's Water Efficiency Coordinator at [pmcfarland@hrwater.org](mailto:pmcfarland@hrwater.org) or 720-240-4918.

