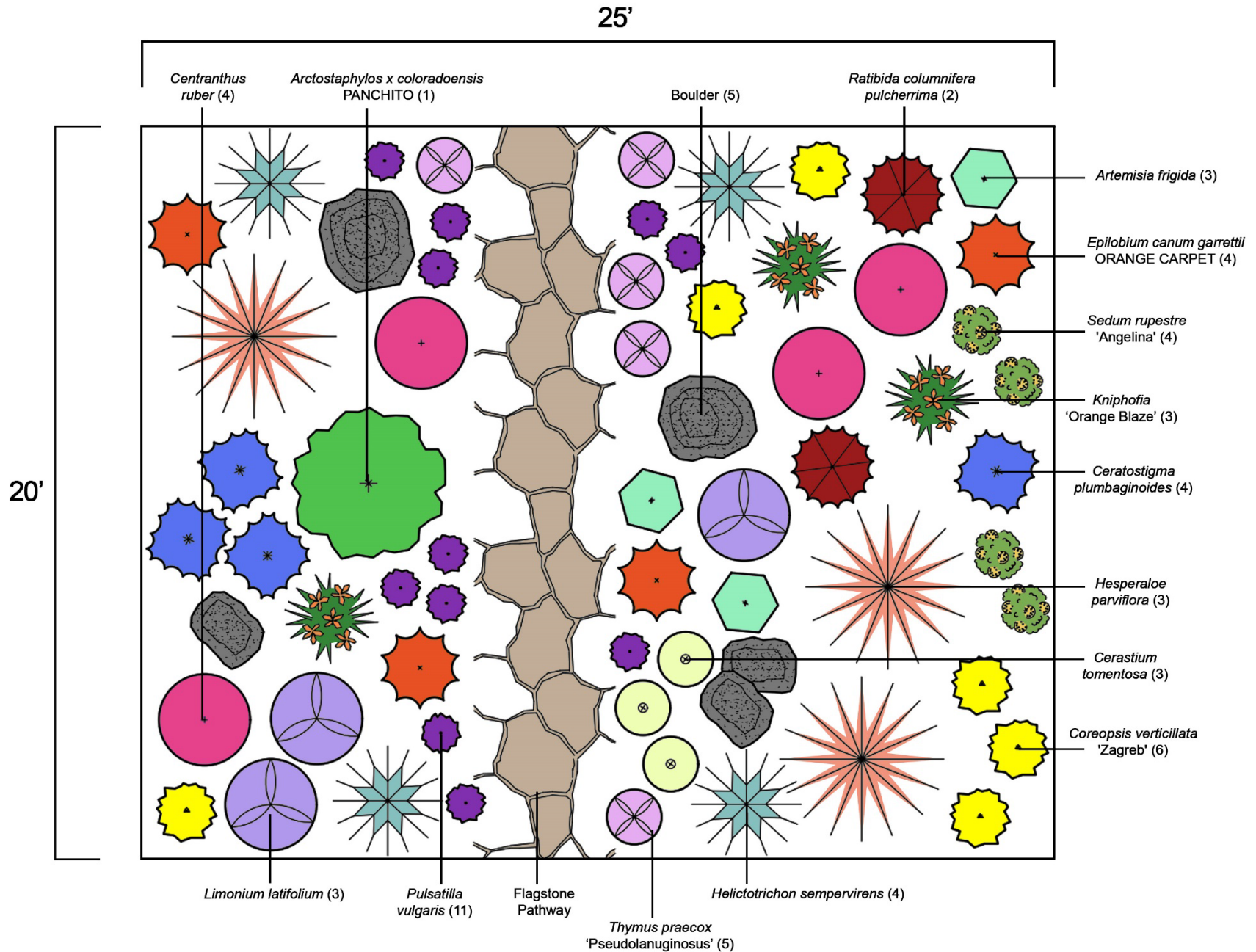


# The Front Range Flower Bed

500 square-foot garden design



## 500 square-foot garden fact sheet

Scientific Name	Common Name	Water Requirement	Sun Exposure	Bloom Time	Low Flammability	Features	Height	Spread	Maintenance
<i>Arctostaphylos x coloradoensis</i> PANCHITO	PANCHITO Manzanita	Very Low	Sun to Filtered Shade	Late Winter to Early Spring	No	Native selection, evergreen, very little water if any once established	15-24"	3-5'	None
<i>Artemisia frigida</i>	Fringed Sage	Very Low	Sun	Late Summer	No	Aromatic, deer resistant	6-15"	18-24"	Cut back browned foliage to the ground in spring
<i>Centranthus ruber</i>	Red Valerian	Low	Sun	Early to Late Summer	Yes	Attracts pollinators, showy flowers, cut flower	2-3'	18-24"	Cut back browned foliage to the ground in spring
<i>Cerastium tomentosum</i>	Snow in Summer	Low	Sun	Late Spring to Early Summer	Yes	Attracts pollinators, early bloomer, rabbit and deer resistant	6-12"	12-18"	Somewhat evergreen, cut back browned foliage to the ground in spring
<i>Ceratostigma plumbaginoides</i>	Plumbago	Low	Sun to Shade	Mid to Late Summer	Yes	Attracts pollinators, foliage turns red in the fall	8-12"	18-24"	Cut back browned foliage to the ground in spring
<i>Coreopsis verticillata</i> 'Zagreb'	Zagreb Coreopsis	Low	Sun	Mid- Summer to Fall	Yes	Attracts pollinators, rabbit and deer resistant	12-18"	12-18"	Cut back browned foliage to the ground in spring



Scientific Name	Common Name	Water Requirement	Sun Exposure	Bloom Time	Low Flammability	Features	Height	Spread	Maintenance
<i>Epilobium canum garrettii</i> ORANGE CARPET	ORANGE CARPET Hummingbird Trumpet	Low	Sun	Late Summer to Fall	No	Attracts hummingbirds	4-6"	15-20"	Cut back browned foliage to the ground in spring
<i>Helictotrichon sempervirens</i>	Blue Avena Grass	Low	Sun	Early to Mid-Summer	No	Blue-grey foliage adds unique accent, winter interest	2-3'	18-24"	Cut back in spring to old growth or 6 inches above ground
<i>Hesperaloe parviflora</i>	Red False Yucca	Very Low	Sun	Summer	Yes	Orange-red flowers on stalks twice the height of foliage	3-4'	4-Mar	Cut flower stalks back to foliage in spring
<i>Kniphofia</i> 'Orange Blaze'	Orange Blaze Torch Lily	Low	Sun	Mid to Late Summer	Yes	Attracts pollinators, deer resistant	24-30"	18-24"	Cut flower stalks back to foliage in spring
<i>Limonium latifolium</i>	Sea Lavendar	Low	Sun	Mid to Late Summer	No	Excellent for cut and dried flowers	18-24"	12-18"	Cut back browned foliage to the ground in spring
<i>Pulsatilla vulgaris</i>	European Pasqueflower	Low	Sun to Shade	Early Spring	No	Early bloomer with attractive seed pods, deer resistant	6-12"	8-12"	Cut back browned foliage to the ground in spring



Scientific Name	Common Name	Water Requirement	Sun Exposure	Bloom Time	Low Flammability	Features	Height	Spread	Maintenance
<i>Ratibida columnifera pulcherrima</i>	Prairie Red Coneflower	Very Low	Sun	Early to Late Summer	No	Native, reseeds, attracts pollinators, deer and rabbit resistant	18-24"	18-24"	Cut back browned foliage to the ground in spring
<i>Sedum rupestre</i> 'Angelina'	Angelina Stonecrop	Low	Sun	Summer	Yes	Groundcover, easy to grow, bright foliage provides year-round interest	4-6"	12-18"	None
<i>Thymus praecox</i> 'Pseudolanuginosus'	Woolly Thyme	Low	Sun	Spring to Early Summer	Yes	Groundcover, works well around stepping stones and rock gardens	0.5"	12-18"	None

If you need additional information or have questions regarding this garden design and fact sheet, please contact Highlands Ranch Water's Water Efficiency Coordinator at [pmcfarland@hrwater.org](mailto:pmcfarland@hrwater.org) or 720-240-4918.

