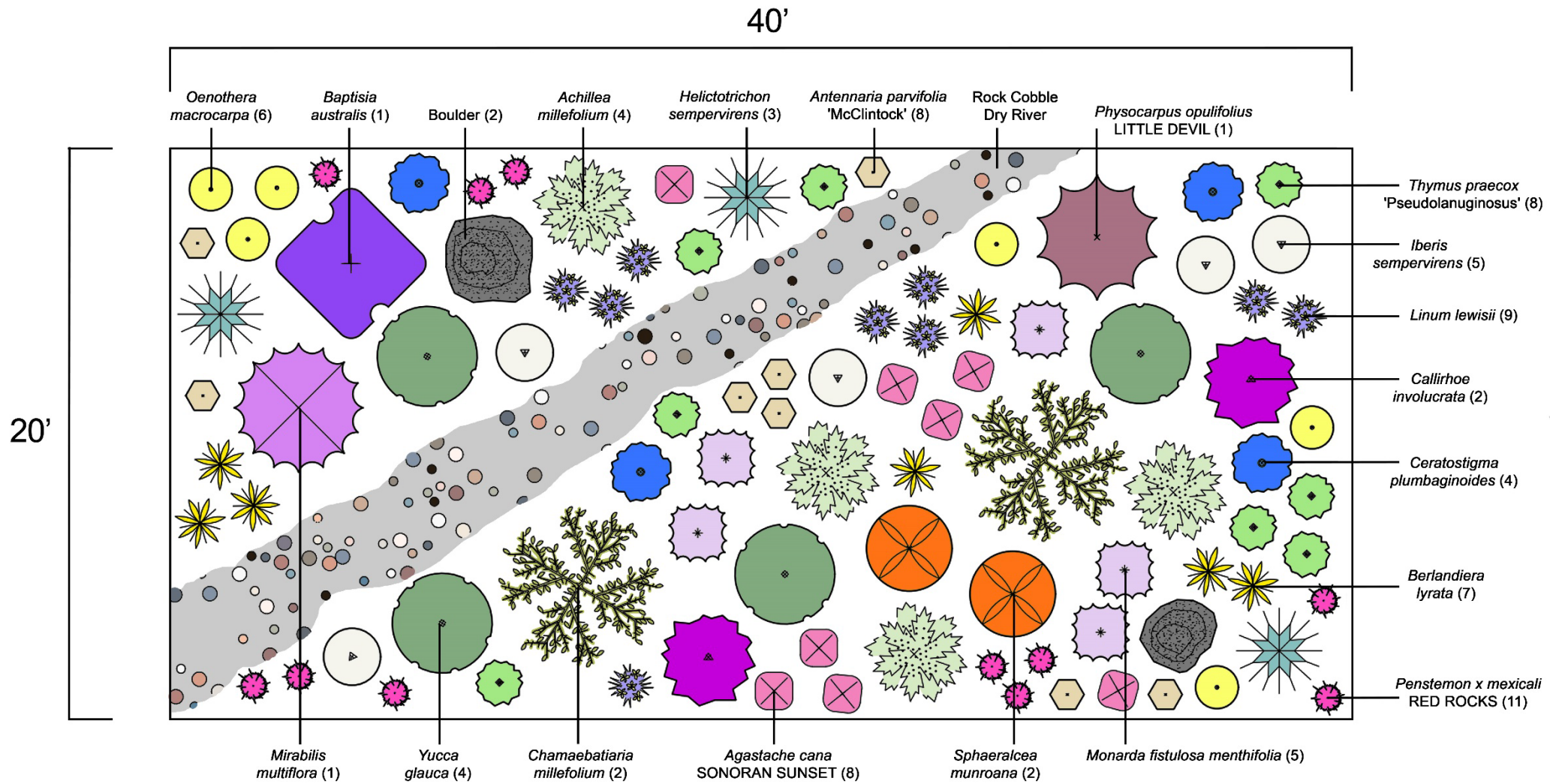


# The Bee's Knees

800 square-foot garden design



## 800 square-foot garden fact sheet

Scientific Name	Common Name	Water Requirement	Sun Exposure	Bloom Time	Low Flammability	Features	Height	Spread	Maintenance
<i>Achillea millefolium</i>	Common White Yarrow	Low	Sun	Summer	Yes	Attracts pollinators, deer and rabbit resistant	1-2'	2-3'	Cut back browned foliage to the ground in spring
<i>Agastache cana</i> SONORAN SUNSET	SONORAN SUNSET Hyssop	Low	Sun	Summer	No	Aromatic, attracts pollinators, deer resistant	12-18"	12-15"	Cut back browned foliage to the ground in spring
<i>Antennaria parvifolia</i> 'McClintock'	Dwarf Pussytoes	Very Low	Sun	N/A	Yes	Native selection, ground cover ideal for rock gardens	1-2"	8-12"	Cut flower stalks back to foliage in spring
<i>Baptisia australis</i>	False Indigo	Low	Sun to Filtered Shade	Early Summer	No	Attracts pollinators, deer and rabbit resistant, attractive seed pods	3-4'	2-3'	Cut back browned foliage to the ground in spring
<i>Berlandiera lyrata</i>	Chocolate Flower	Low	Sun	Summer to Fall	No	Native, attracts pollinators, aromatic	1-2'	12-18"	Cut back browned foliage to the ground in spring



Scientific Name	Common Name	Water Requirement	Sun Exposure	Bloom Time	Low Flammability	Features	Height	Spread	Maintenance
<i>Callirhoe involucrata</i>	Prairie Winecups	Low	Sun	Early Summer to Fall	Yes	Attracts pollinators, long bloom season	6-12"	2-3'	Pinch back to prevent spreading if desired, cut back browned foliage to the ground in spring
<i>Ceratostigma plumbaginoides</i>	Plumbago	Low	Sun to Shade	Mid to Late Summer	Yes	Attracts pollinators, foliage turns red in the fall	8-12"	18-24"	Cut back browned foliage to the ground in spring
<i>Chamaebatiaria millefolium</i>	Fernbush	Very Low	Sun	Mid to Late Spring	No	Attracts pollinators, aromatic, evergreen foliage	3-5'	3-6'	Limit pruning to dead stalks in early winter, flowers grow from mature foliage
<i>Helictotrichon sempervirens</i>	Blue Avena Grass	Low	Sun	Early to Mid-Summer	No	Blue-grey foliage adds unique accent, winter interest	2-3'	18-24"	Cut back in spring to old growth or 6 inches above ground
<i>Iberis sempervirens</i>	Evergreen Candytuft	Low	Sun	Late Spring to Early Summer	Yes	Early bloomer, semi-evergreen	8-12"	18-24"	Mulch in winter with evergreen boughs, sheer back browned flowers after bloom
<i>Linum lewisii</i>	Wild Blue Flax	Low	Sun	Summer	Yes	Native, attracts pollinators, can be short-lived	1-2'	12-18"	Cut back browned foliage to the ground in spring



Scientific Name	Common Name	Water Requirement	Sun Exposure	Bloom Time	Low Flammability	Features	Height	Spread	Maintenance
<i>Mirabilis multiflora</i>	Desert Four O'clock	Very Low	Sun	Mid to Late Summer	No	Native, attracts pollinators, deer and rabbit resistant	1-3'	2-4'	Cut back browned foliage to the ground in spring
<i>Monarda fistulosa menthifolia</i>	Lavender Bee-Balm	Low	Sun	Mid-Summer	No	Native, attracts pollinators, aromatic, rabbit resistant	2-3'	18-24"	Cut back browned foliage to the ground in spring
<i>Oenothera macrocarpa</i>	Missouri Evening Primrose	Low	Sun	Mid-Summer	Yes	Attracts pollinators, flowers open in the evening	1-2'	18-24"	Cut back browned foliage to the ground in spring
<i>Penstemon x mexicali</i> RED ROCKS	RED ROCKS Penstemon	Low	Sun	Spring to Summer	Yes	Native selection, attracts pollinators	12-15"	8-12"	Cut back browned foliage to the ground in spring
<i>Physocarpus opulifolius</i> LITTLE DEVIL	LITTLE DEVIL Ninebark	Low	Sun	Summer	No	Attracts pollinators, deer and rabbit resistant	3-4'	3-4'	Remove oldest canes every 3 to 5 years
<i>Sphaeralcea munroana</i>	Orange Globe Mallow	Very Low	Sun	Summer to Fall	No	Native, attracts pollinators, showy flowers, tolerates poor soils	1-2'	1-2'	Cut back browned foliage to the ground in spring
<i>Thymus praecox</i> 'Pseudolanuginosus'	Woolly Thyme	Low	Sun	Spring to Early Summer	Yes	Groundcover, works well around stepping stones and rock gardens	0.5"	12-18"	None



Scientific Name	Common Name	Water Requirement	Sun Exposure	Bloom Time	Low Flammability	Features	Height	Spread	Maintenance
<i>Yucca glauca</i>	Soapweed Yucca	Very Low	Sun	Mid to Late Summer	Yes	Native, attracts pollinators, sword-like leaves provide year-round interest	2-4'	2-4'	Cut flower stalks back to foliage in spring

If you need additional information or have questions regarding this garden design and fact sheet, please contact Highlands Ranch Water's Water Efficiency Coordinator at [pmcfarland@hrwater.org](mailto:pmcfarland@hrwater.org) or 720-240-4918.

